



ICLEI東亞地區高雄環境永續發展能力訓練中心

ICLEI Kaohsiung Capacity Center

ICLEI KCC for Inclusive and Sustainable Resilient Cities

Director Wan-Tien Tsai

2019/10/09

Universities for SDG Forum at National University of Kaohsiung



ICLEI & ICLEI KCC

•I.C.L.E.I
Local
Governments
for Sustainability

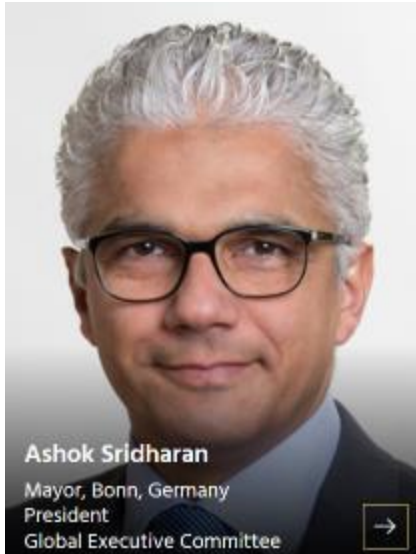


BY CITIES, FOR CITIES



2018-2021 ICLEI Global Executive Committee leaderships

President



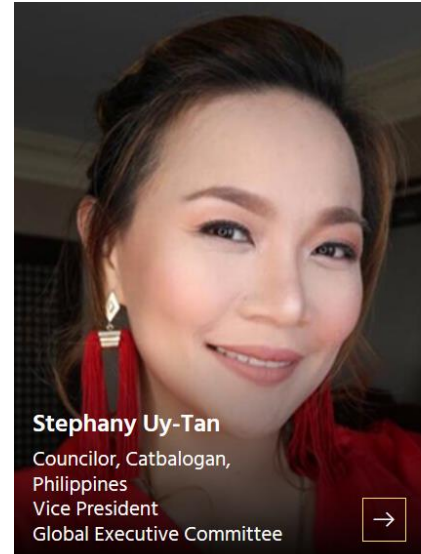
Mayor
Bonn, Germany

First Vice President

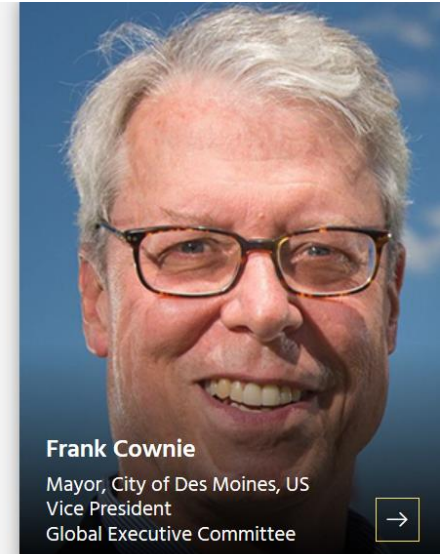


Councillor
Melbourne, Australia

Vice Presidents



Councillor
Catbalogan, Philippines



Mayor
Des Moines, USA



EAST ASIA EXECUTIVE COMMITTEE

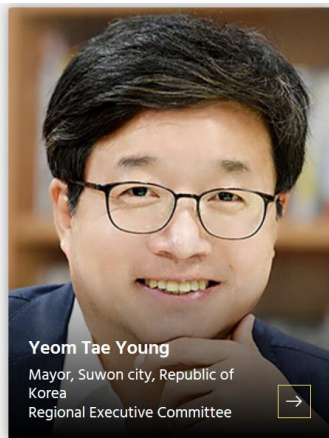
2018-2021 ICLEI East Asia Regional Committee members

Japan



Mayor
Kyoto

Republic of Korea



Mayor
Suwon City

Republic of Korea



Vice Mayor
Seoul
Metropolitan
Government

Mongolia



Mayor
Ulaanbaatar

Taiwan



Deputy Mayor
Kaohsiung City



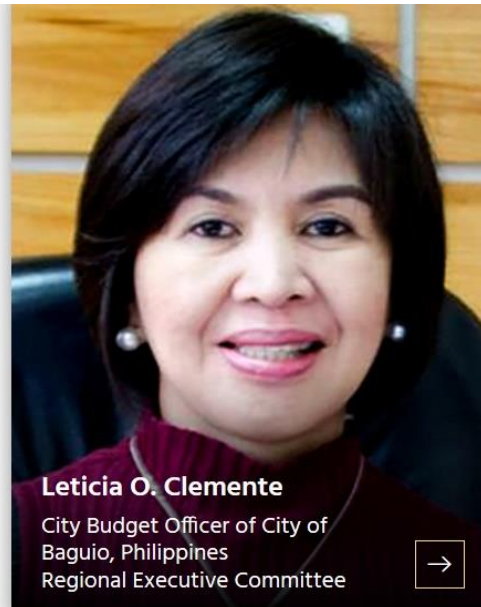
2018-2021 ICLEI Southeast Asia Regional Committee members

Indonesia



Mayor
Bogor

Philippines

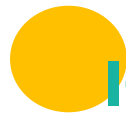


City Budget Officer
Baguio

Malaysia



Municipal President
of Municipal Council
Seberang Perai



ICLEI- Local Government for Sustainability

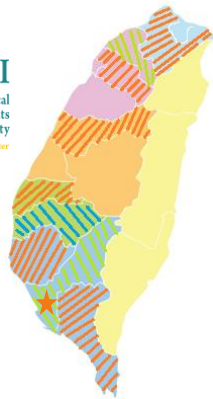
✓ For Cities, by Cities

- 22 Offices Globally
- 1,750+ Committed members

- Active in 100+ Countries
- Influence 25% Urban / 20% Global population



10 Member Cities in Taiwan



LOCAL ACTIONS, GLOBAL PERSPECTIVES

Ultimate goals



Advocacy, consultation, scientific report

Partners



United Cities
and Local Governments



NGOs NPOs



National govts



International agencies

Capacity building

City network

Local actions



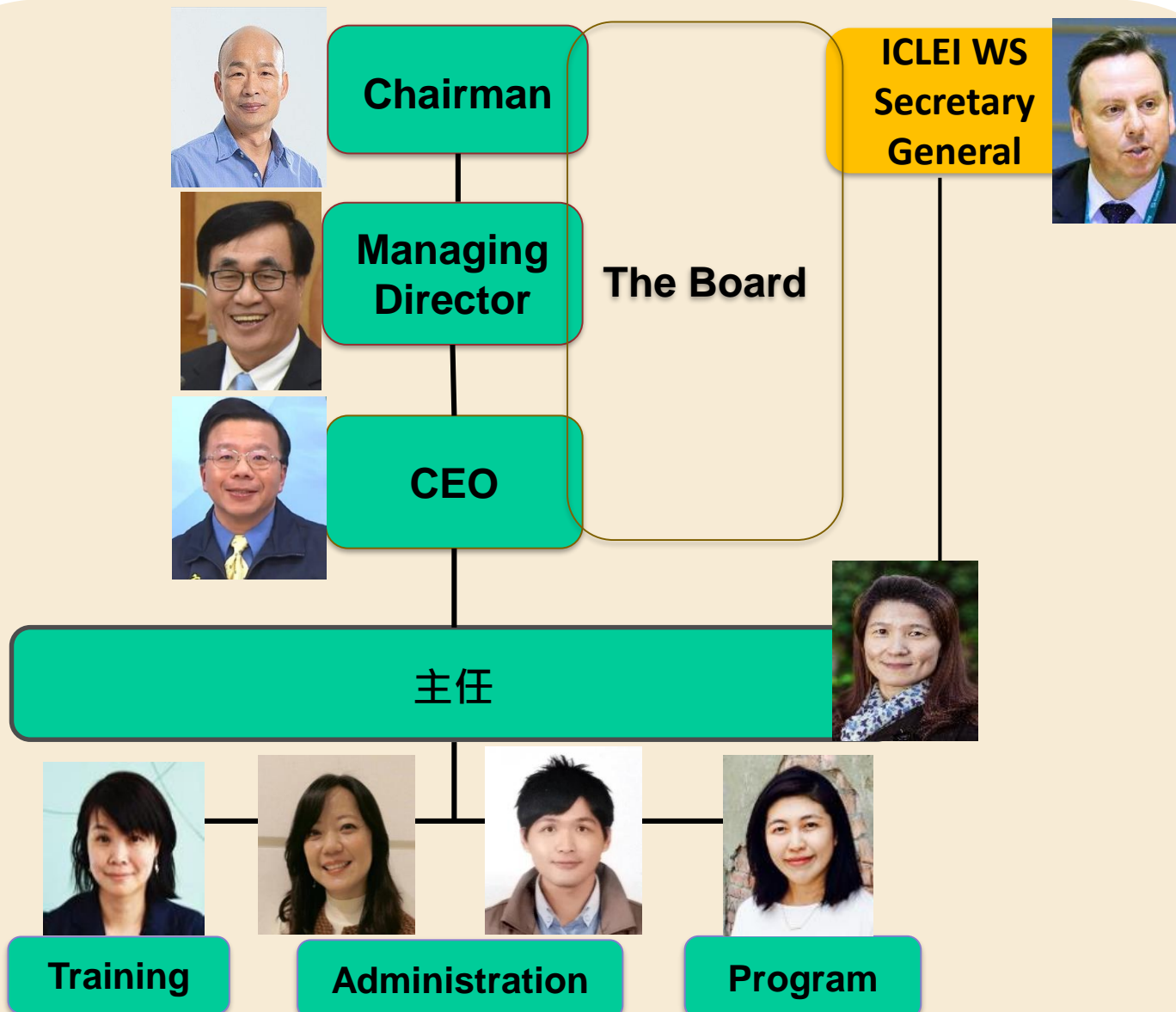
ICLEI KAOHSIUNG CAPACITY CENTER

ICLEI KCC

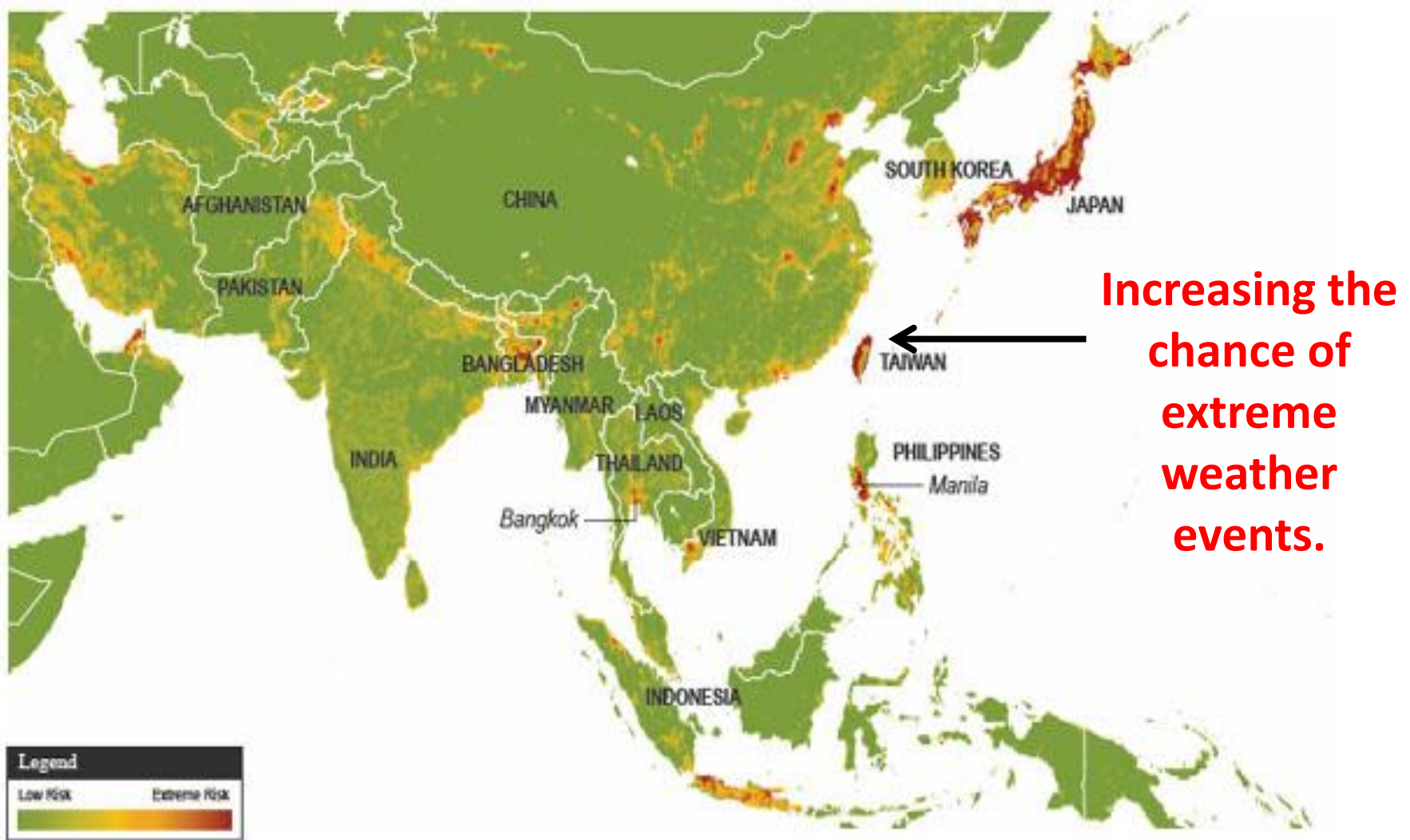
KCC

- Established in 2012
- Hosted by the Kaohsiung Government
- ICLEI-recognized capacity center in East Asia
- Fulfill the tasks of the ICLEI World Secretariat
- Supports ICLEI Regional Offices
 - ✓ trainings
 - ✓ information exchanges
 - ✓ the bridge to connect representatives of city and local governments

ICLEI KAOHSIUNG CAPACITY CENTER



REGION PRONE TO MULTIPLE HAZARDS



CITIES ON THE GLOBE

Cities is the **origin of problems**, but also the **providers of solutions**.

75%
of Global Energy
Consumption
and GHG Emissions

80%
of Global GDP

54%
of the World' s
Population

63%
of the World' s
Venture Capital
Investment



THE FIVE ICLEI PATHWAYS

- ICLEI has identified five pathways of development that are designed to create **SYSTEMIC CHANGE**. The **FIVE ICLEI PATHWAYS** are low emission, nature-based, equitable, resilient and circular development.



LOW EMISSION
DEVELOPMENT



NATURE-BASED
DEVELOPMENT



EQUITABLE
AND PEOPLE-
CENTERED
DEVELOPMENT



RESILIENT
DEVELOPMENT



CIRCULAR
DEVELOPMENT



ICLEI'S VISION: 5 PATHWAYS

Green Circular Cities Coalition

Procura+ East Asia Network

EcoMobility

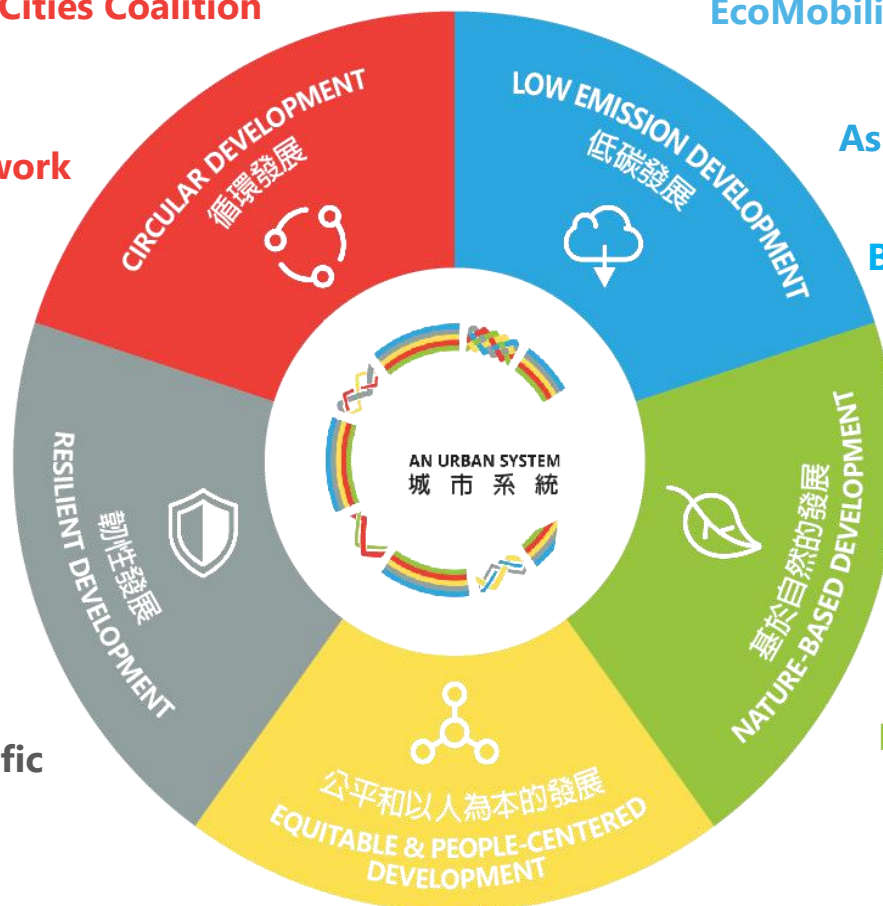
Asia LEDS Partnership

Building Efficiency Accelerator

East Asia Clean Air Cities

Nature-based Solutions

Eco-tourism City



ICLEI & UN SDGs



UN SUSTAINABLE DEVELOPMENT GOALS



Transforming our World: the 2030 Agenda for Sustainable Development

SMART CITY & SUSTAINABLE CITY





ICLEI'S PATHWAYS ADVANCE SDG'S

NATURE-BASED DEVELOPMENT



RESILIENT DEVELOPMENT



LOW EMISSION DEVELOPMENT



CIRCULAR DEVELOPMENT



EQUITABLE AND PEOPLE-CENTERED DEVELOPMENT





ICLEI GLOBAL PROJECTS AND SDGs



ICLEI has 194 Activities worldwide, each addressing

multiple SDG's.



Resilient Cities in Taiwan



Kaohsiung City

高雄市



打造與水共生的韌性城市

傳統治水措施大多採興建堤防，但隨著都市發展的需要，集水區內的土地開發與不透水設施增加，颱風豪雨來臨時，往往因洪水無處宣洩而溢堤。此外，人民普遍依賴政府及堤防工程，當災害強度超過工程保護極限，因人民無法自救，往往造成生命財產損失。

高雄市的防洪治水策略為上游保水、中游滯洪及下游排洪，除了建置緊急應變防洪預警系統，也針對河道及防洪設施做藍帶景觀營造，打造高雄為防洪減災、與水共生的韌性城市。

高雄市於2002年開始規劃興建滯洪池，至2018年底已完成13座，總蓄洪量約295.6萬噸，現階段整體淹水面積已較縣市合併前減少約6,352公頃，滯洪量高居全國之冠。

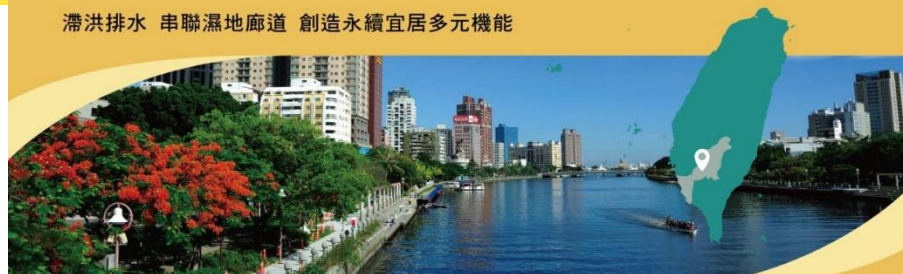
高雄市現有21處濕地，面積超過1千公頃，同時依據濕地廊道的特性進行發展規劃：

1. 北高雄瀉湖濕地廊道：候鳥觀賞、生態教育
2. 典寶後勁溪流域濕地廊道：結合學區塑造環境教育場所
3. 高雄都會環狀濕地廊道：都市生活結合近郊踏青
4. 高屏溪流域濕地廊道：鄉村及山城生態



洲仔濕地（高雄市政府工務局提供）

滯洪排水 串聯濕地廊道 創造永續宜居多元機能



完善治水系統 兼顧生態延續及文化保存

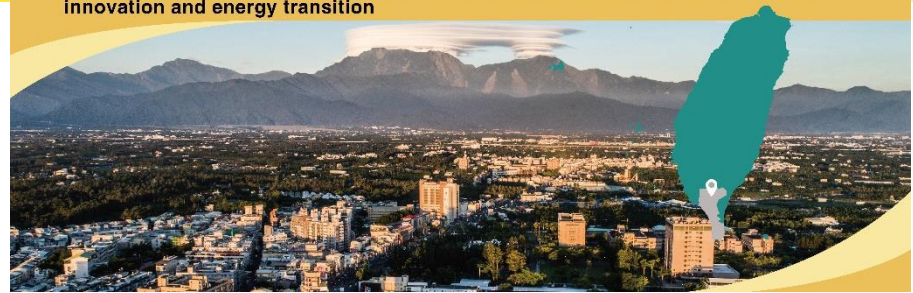
從2008到2018這十年間，高雄經歷了四次超過一百年頻率才會發生一次的強降雨災害，在面對時雨量高達100毫米以上的急降雨，高雄市政府除了投入災害應變機制及水利建設，也選擇與水共存，還地於河、保留綠地並讓濕地重現。

每座滯洪池都有特色和故事。昔日三民區低窪的寶業里，颱風大雨每每造成附近地區積淹水，2012年11月寶業生態滯洪池完工，南池維持局部蓄水量，營造出穩定的生態廊道；北池寬闊的大草原，是民眾假日扶老攜幼休憩運動的最愛。

鼓山區柴山滯洪公園最初開挖渠道時，發現「牛稠子古文化遺址」，立即決定停工，委交文化局考古，聘請專家學者到場勘鑑，3個月後才復工並變更設計，好善加保存發掘現場。該項建設榮獲行政院公共工程委員會第17屆公共工程金質獎水利工程類特優。從防洪工程結合雨水下水道技術，到愛護文化史蹟的作為，高雄市政府團隊持續朝著建設宜居城市的目標邁進。



柴山滯洪池（高雄市政府水利局提



Achievement for the Vision of 100% Renewable Energy

By August 31st, 2019, the total installed capacity of renewable energy in Pingtung County has been accumulated nearly 343 MW, which was ranked No.3 among counties. To achieve the vision of 100% renewable energy, Pingtung County Government set several approaches, for example, (1) establishing the 1st Green Energy Promotion Office in Taiwan, (2) transforming swine waste into green power, (3) building a disaster-preventive microgrid system, (4) combining the agriculture and aquaculture facilities to develop solar energy, and making good use of rooftops, ponds, dikes, and uncultivated farms to generate green power.

Especially, the government established the 1st floating PV system in 2016 and the 1st PV dike in 2018 in Taiwan. Afterward, other cities have also installed PV panels on dams, lakes, and idle facilities.

The government, renewable energy companies, and the public has worked together to develop green energy and aim at achieving 100% renewable energy, which is approximate 800MW of installation for households in Pingtung County. Owing to the limited feed lines, the development of ground-mounted PV systems which utilize ultra-high voltage system will be the main approach. The successful experiences in Pingtung County would be the cornerstone for energy transition in Taiwan.



ICLEI KCC 2019 Achievements

✓ International collaborations 20+



DIVERSIFIED TRAINING PROGRAMS

City Counselors



City officers



ICLEI x CDP Unified carbon reporting workshop



Smart City Summit



UNDRR Training

FACILITATE INTERNATIONAL PARTICIPATIONS & EXCHANGES FOR CITIES



High level leader's Dinner



✓ Facebook- ICLEI Kaohsiung Capacity Center



✓ Website- <http://kcc.iclei.org/>

